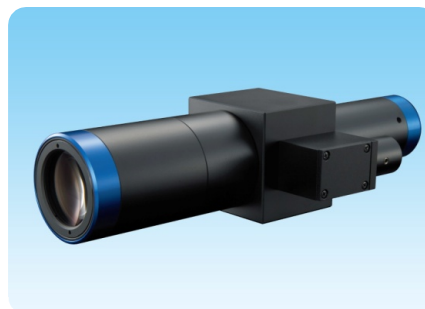


# SOD-10X

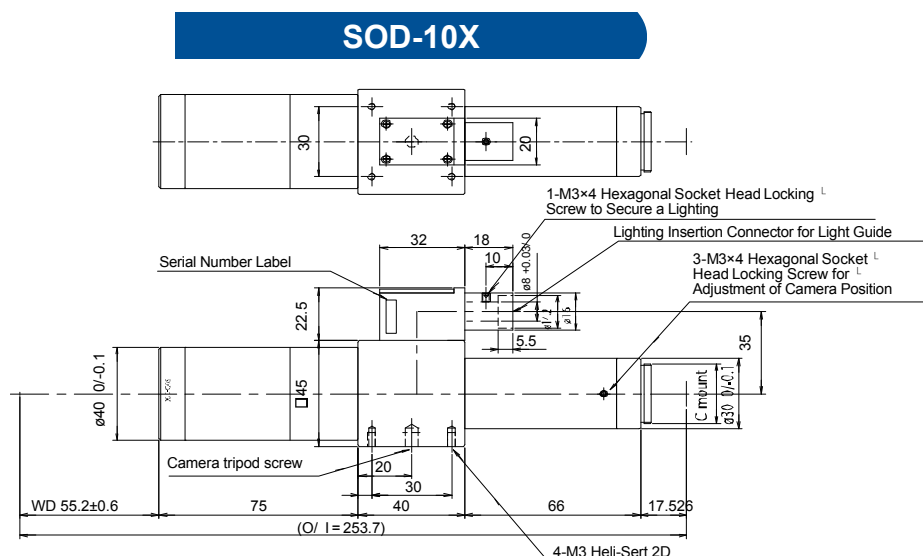
**SCHOTT MORITEX Reference**  
Data do not guarantee the performance of the product

## Super Optical Device

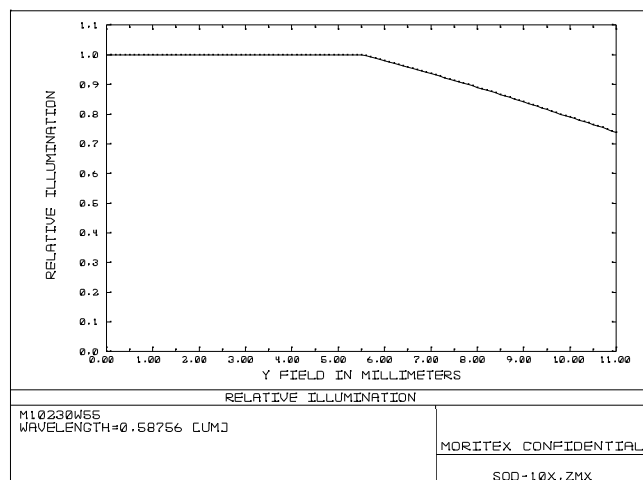
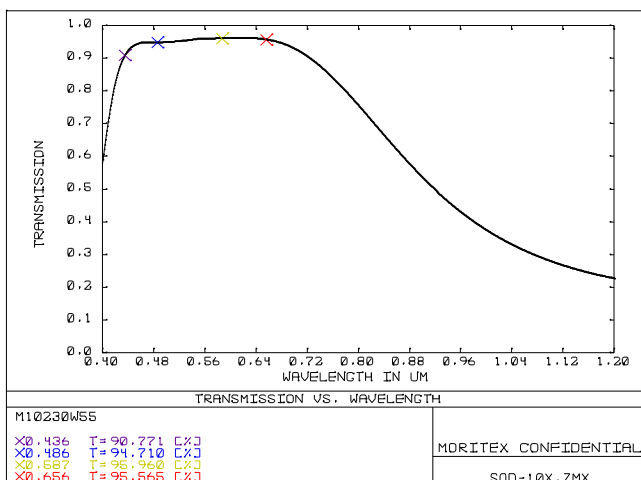
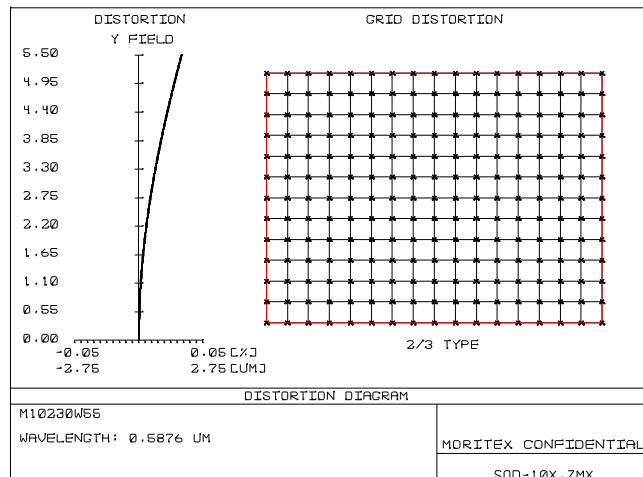
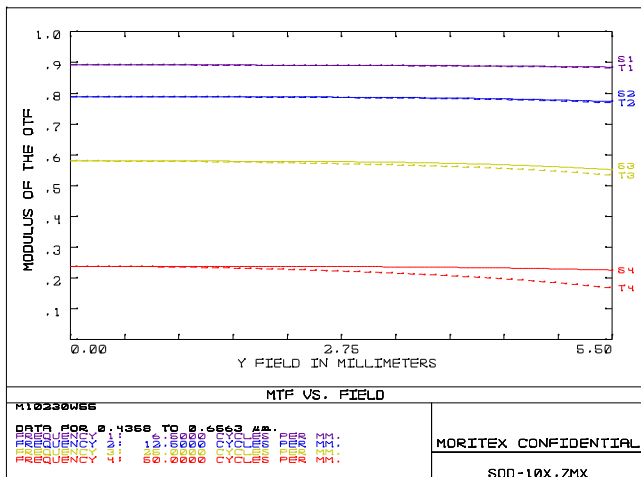
Drawing No. A03182



レンズ形式	Lens Type	Fixed Magnification Object Side Telecentric Lens
光学倍率	Magnification	10.00
焦点距離 (mm)	Focal Length	9.27
有効Fno	Effective Fno	22.00
NA	Numerical Aperture	0.230
WD/OD (mm)	Working/Object Distance	55.2/57.5
O/I (mm)	Object to Image Distance	253.70
鏡筒長 (mm)	Mechanical Tube Length	181.00
レンズバック (mm)	Lens Back	78.90
被写界深度 (mm)	DOF @PCoC $\phi$ 0.04mm	0.017
分解能 ( $\mu$ m)	Resolution @ $\lambda$ =550nm	1.5
前側/後側主点位置 (mm)	Front/Rear Principal Position	-47.31/-22.54
入射/出射瞳位置 (mm)	Entrance/Exit Pupil Position	964,639.29/-13.27
入射/出射瞳径 (mm)	Entrance/Exit Pupil Diameter	457,544.35/4.40
テレセントリシティー (deg.)	Telecentricity	0.000(1/3Inch) 0.000(1/2Inch) 0.000(1/1.8Inch) 0.000(2/3Inch)
光学ディストーション (%)	Optical Distortion	0.011(1/3Inch) -0.097(1/2Inch) 0.024(1/1.8Inch) 0.034(2/3Inch)
周辺光量比 (%)	Relative Illumination	99.99(1/3Inch) 99.99(1/2Inch) 100.00(1/1.8Inch) 100.00(2/3Inch)
質量 (g)	Weight	500.0
マウント	Mount	C Mount
イメージサークル径 (mm)	Image Circle	$\phi$ 11
最大適合カメラ	Largest Compatible Camera	2/3 Inch



**SCHOTT MORITEX Reference**  
Data do not guarantee the performance of the product



内容は、通知なしに随時変更されることがあります。

The content is subject to change at any time without notification.