

MML08-HR65D / HR65

SCHOTT MORITEX Reference
Data do not guarantee the performance of the product

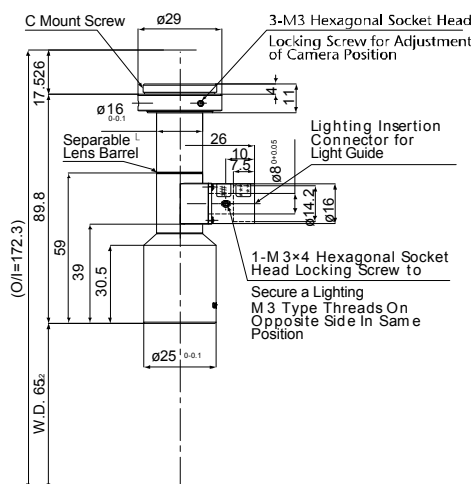
MML-High Resolution

Drawing No. A04077/A04078

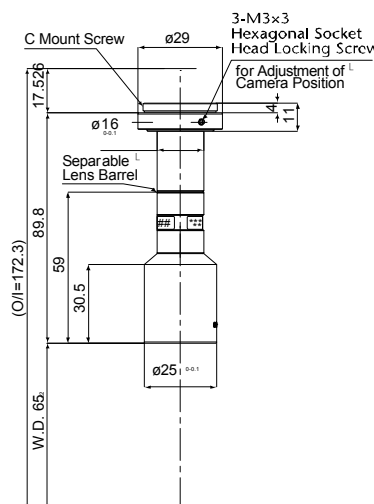


| レンズ形式 | Lens Type | Fixed Magnification Object Side Telecentric Lens |
|-------------------|-------------------------------|---|
| 光学倍率 | Magnification | 0.80 |
| 焦点距離 (mm) | Focal Length | 65.70 |
| 有効Fno | Effective Fno | 9.90 |
| NA | Numerical Aperture | 0.040 |
| WD/OD (mm) | Working/Object Distance | 65.0/67.0 |
| O/I (mm) | Object to Image Distance | 172.30 |
| 鏡筒長 (mm) | Mechanical Tube Length | 89.80 |
| レンズバック (mm) | Lens Back | 48.07 |
| 被写界深度 (mm) | DOF @PCoC ϕ 0.04mm | 1.200 |
| 分解能 (μ m) | Resolution @ $\lambda=550$ nm | 8.4 |
| 前側/後側主点位置 (mm) | Front/Rear Principal Position | 80.76/-70.04 |
| 入射/出射瞳位置 (mm) | Entrance/Exit Pupil Position | 3,015.53/-5.81 |
| 入射/出射瞳径 (mm) | Entrance/Exit Pupil Diameter | 247.72/5.42 |
| テレセントリシティー (deg.) | Telecentricity | 0.089(1/3Inch) 0.089(1/2Inch) 0.089(1/1.8Inch) 0.097(2/3Inch) |
| 光学ディストーション (%) | Optical Distortion | 0.003(1/3Inch) 0.003(1/2Inch) 0.003(1/1.8Inch) 0.013(2/3Inch) |
| 周辺光量比 (%) | Relative Illumination | 99.21(1/3Inch) 99.37(1/2Inch) 99.21(1/1.8Inch) 98.85(2/3Inch) |
| 質量 (g) | Weight | 64.0/60.0 |
| マウント | Mount | C Mount |
| イメージサークル径 (mm) | Image Circle | ϕ 11 |
| 最大適合カメラ | Largest Compatible Camera | 2/3 Inch |

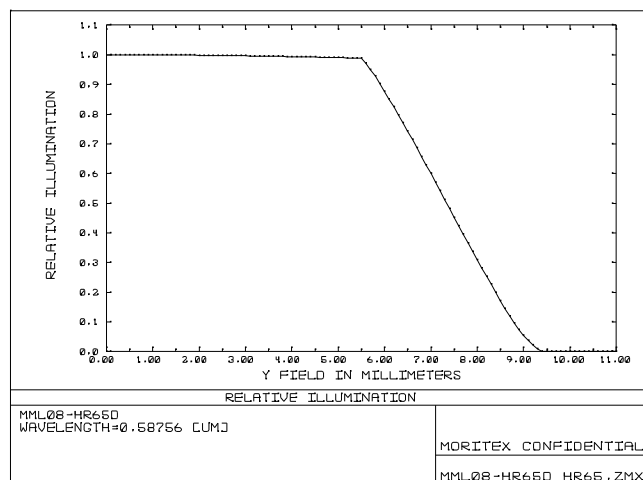
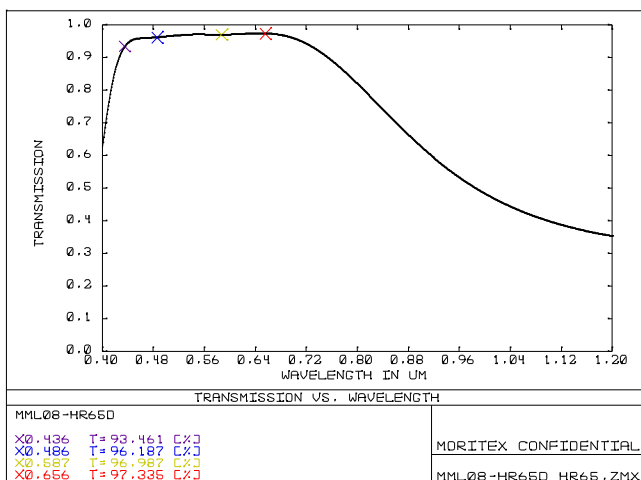
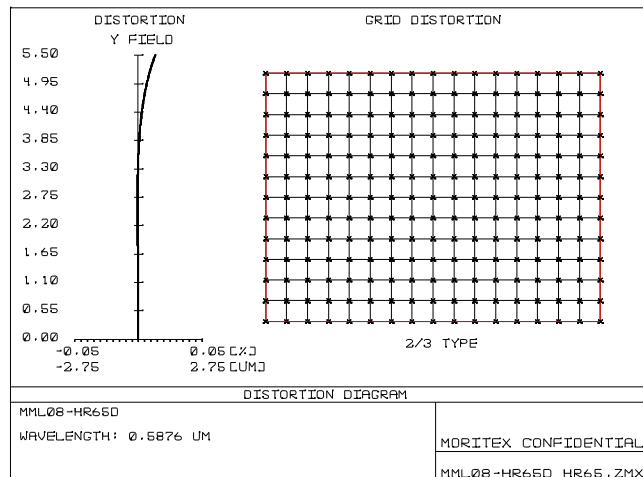
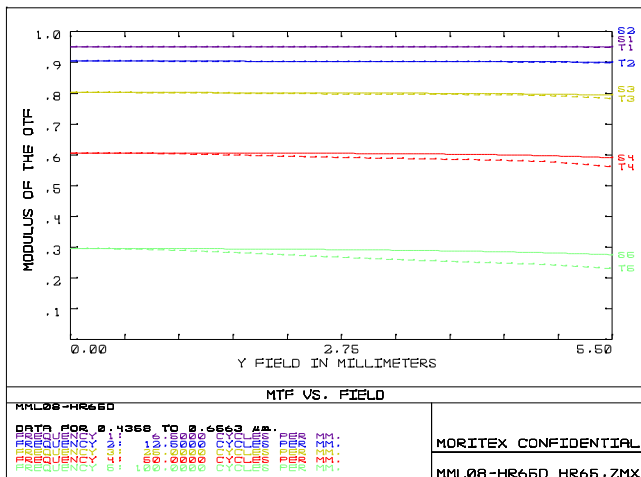
MML08-HR65D



MML08-HR65



SCHOTT MORITEX Reference
Data do not guarantee the performance of the product



内容は、通知なしに随時変更されることがあります。

The content is subject to change at any time without notification.